



For more information contact your local distributor



## PT. ALTRAK 1978

Head Office : Jl. RC. Veteran No.4 Bintaro, Jakarta Selatan 12330  
 Phone : (021) 736 1978 (hunting)  
 Fax : (021) 736 1977, 736 3302  
 E-Mail : al78@altrak1978.co.id  
 Web Address : www.altrak1978.co.id



ptaltrak1978  
 altrak1978  
 @altrak1978  
 www.altrak1978.co.id

### Office Networks

<b>ASEM REGES (Outlet)</b> Jl. Lantzer Raya Blok A1 No. 7-8, RT. 004/007 Kel. Ps. Baru, Kec. Sawah Besar - Jakarta 10710 Phone : +62 21-34834511, 34854510 Fax : +62 21-34834506 e-mail : depocanreges@altrak1978.co.id	<b>BENETE (Depo)</b> Jl. Raya Berete - Melak Kec. Melak, Kab. Sumbawa Barat 84481 Phone : +62 272-63260, 635578 Fax : +62 272-63260 e-mail : al78@bnet@altrak1978.co.id	<b>CILEGON (Outlet)</b> Komplek Pondok Cilegon Indah Blok A3 No. 5 RT. 003/006, Kedaleman, Cibeer - Cilegon 42442 Phone : +62 254-390678, 399971 Fax : +62 254-399977 e-mail : depocilegon@altrak1978.co.id	<b>MAKASSAR (Branch)</b> Jl. S. Kimo Raya L. Kavling B-5, Kelurahan Kapas, Kecamatan Biringkanyu - Makassar Phone : +62 401-4741305 e-mail : depocmak@altrak1978.co.id	<b>PEKANBARU (Branch)</b> Jl. Soekarno - Hatta Km. 6, No. 78 Pekanbaru 28282 Phone : +62 761-567678 Fax : +62 761-567677 e-mail : al78@pk@altrak1978.co.id	<b>SEMARANG (Branch)</b> Jl. Karang Anyar No. 10 - Semarang 50135 Phone : +62 24-3586902, 3586962 Fax : +62 24-3586962 e-mail : al78@sg@altrak1978.co.id
<b>BALIKPAPAN (Branch)</b> Jl. Jend. Sudirman No. 21, Balikpapan 76114 Phone : +62 542-761978 Fax : +62 542-761977 e-mail : al78@bpp@altrak1978.co.id	<b>BENGKULU (Rep. Office)</b> Jl. DP Payung Negara No. 50, RT. 001/RW. 001 Kel. Bentengan, Kec. Sebelar - Bengkulu Kota Phone : +62 751-485624-27 e-mail : al78@bng@altrak1978.co.id	<b>DENPASAR (Branch)</b> Jl. Gatot Subroto Timur No. 195 - Denpasar 80239 Phone : +62 361-7427178, 234629 Fax : +62 361-263651 e-mail : al78@dp@altrak1978.co.id	<b>MANADO (Rep. Office)</b> Jl. Raya Manado, Bitung, Jaga L. Kel. Maumbi Kec. Kellawat - Kota Manado 95117 Phone : +62 431-812612 Fax : +62 431-816362 e-mail : al78@md@altrak1978.co.id	<b>PONTIANAK (Branch)</b> Jl. KS. Tubun No. 40 - Forstevak 78121 Phone : +62 561-748670, 748778 Fax : +62 561-734732 e-mail : al78@pn@altrak1978.co.id	<b>SORONG (Branch)</b> Jl. Basuki Rahmat Km. 8 Kel. Malingkedi, Kec. Malamsisma, Kota Sorong - Papua Barat Phone : +62 21-9871978 Fax : +62 21-8490629 e-mail : al78@sb@altrak1978.co.id
<b>BALIKPAPAN (Mining Support &amp; Rebuild Center)</b> Jl. Jend. Sudirman No. 21, Balikpapan 76114 Phone : +62 542-761978 Fax : +62 542-761977 e-mail : al78@bpp@altrak1978.co.id	<b>BENGALON (Depo)</b> PT. Dama Herveo Tbk. R/A Bengalon Project 75618 Phone : +62 81225430084 e-mail : sprinkler@altrak1978.co.id	<b>JAMBI (Branch)</b> Jl. Lingkar Barat I, RT. 41, Kel. Kemali Asam Bawah Kec. Kota Baru - Jambi 36128 Phone : +62 741-62408, 63699 Fax : +62 741-640978 e-mail : al78@jb@altrak1978.co.id	<b>MEDAN (Branch)</b> Jl. Gatot Subroto Km. 6,2 No. 195 - Medan 20122 Phone : +62 61-849978 Fax : +62 61-8441977 e-mail : al78@md@altrak1978.co.id	<b>SAMARINDA (Branch)</b> Jl. Ciptomangunkusumo, RT. 14 Lapangan III - Samarinda 75131 Phone : +62 541-261978 (Hunting) Fax : +62 541-260292 e-mail : al78@sm@altrak1978.co.id	<b>SURABAYA (Branch)</b> Jl. Bangkot Industri II/27 Surabaya 60293 Phone : +62 21-9871978 Fax : +62 21-8490629 e-mail : al78@sy@altrak1978.co.id
<b>BANDUNG (Branch)</b> Jl. Suk. No. 80 Kel. Ancof, Kec. Regol Bandung - 40254 Phone : +62 22-42827424 e-mail : al78@bd@altrak1978.co.id	<b>BERAU (Depo)</b> Jl. Raya Alam I, RT. 06/RW. 06, Kel. Rinding, Kec. Tibuk Bayur - Berau 77313 Phone : +62 554-2020118/081533878 Fax : +62 554-2020118 e-mail : beaus@altrak1978.co.id	<b>KAWASAN INDUSTRI JATAKE (Equipment Stock Yard)</b> Jl. Gajah Tungga, Kel. Jatake, Kec. Jati Uluwang Kota Melayu Tangerang 15136 Phone : +62 21-2259910 e-mail : roh@yis@altrak1978.co.id	<b>MELAK (Depo)</b> Jl. Sendawar Raya, Barong Tongkok Sendawar Kutai Barat - Kalimantan Timur Phone : +62 531-2020118 e-mail : al78@mel@altrak1978.co.id	<b>SAMARINDA (Mining Support &amp; Rebuild Center)</b> Jl. Ciptomangunkusumo, RT. 14 Lapangan III - Samarinda 75131 Phone : +62 541-261978 (Hunting) Fax : +62 541-260292 e-mail : al78@sm@altrak1978.co.id	<b>TAMAN TEKNO (Parts Distribution Center)</b> Pergudangan Taman Tekno - BSD Tahap VII Blok H3 No. 16 - 18 Tangerang Phone : +62 21-75876118 Fax : +62 21-75876121 e-mail : al78@tk@altrak1978.co.id
<b>BANJARMASIN (Branch)</b> Jl. A. Yani Km. 21,3 No. 89, RT. 01/01 Kel. Lumban Lili Utara, Kec. Liang Anggang Kota Banjar Baru - 70723 Phone : +62 511-3251979, 3257378, 3251361 Fax : +62 511-3251978, 3251580 e-mail : al78@bjm@altrak1978.co.id	<b>BITUNG (Branch)</b> Jl. Walanda Mararik No. 155 Madidi Weru Bitung 95514 Phone : +62 438-35078, 36226 Fax : +62 438-30249 e-mail : al78@btg@altrak1978.co.id	<b>KENDARI (Branch)</b> Jl. Mataka, Kel. Andonouhu, Kec. Poasia Kota Kendari - Sulawesi Tenggara Phone : +62 401-3002564 e-mail : part@kdr@altrak1978.co.id	<b>PADANG (Branch)</b> Jl. By Pass Km. 16,5, Kel. Ar Pecah, Kec. Koto Tangah - Padang 25176 Phone : +62 751-448524-26 Fax : +62 751-448523 e-mail : al78@pd@altrak1978.co.id	<b>SAMPIT (Branch)</b> Jl. Jend. Sudirman, Kel. Mantawa Baru, RT. 47 RW. 08 Kotawaringin Timur, Kalimantan Tengah 74332 Phone : +62 531-261978/24178 Fax : +62 531-2610023 e-mail : al78@sp@altrak1978.co.id	<b>TANJUNG TABALONG (Depo)</b> Main Site Wera Location, Tanjung Prings Kalimantan Selatan 71571 Phone : +62 526-2701578 Fax : +62 526-2027700 e-mail : sprinkler@altrak1978.co.id
<b>BATAM (Branch)</b> Jl. English Point, Kawasan Perintis, Sarana Unggulan Komplek Sarana Industri Point Blok C1 & C2 Batam Center - Batam 29461 Phone : +62 778-571978 (Hunting) Fax : +62 778-424213 e-mail : al78@btm@altrak1978.co.id	<b>BONTANG (Depo)</b> Indonico Coal Mining Project Tanjung Mayang, Desa Suka Rahmat, Kec. Sangatta Kutai Timur - Kalimantan Timur 75683 Phone : +62 8125417977 e-mail : roh.bontang@altrak1978.co.id	<b>KUPANG (Rep. Office)</b> Jl. Timor Raya Km. 6, Kel. Oesapa Barat Kec. Klapa Lima - Kota Kupang - NTT Phone : +62 8125417977 e-mail : al78@kup@altrak1978.co.id	<b>PALEMBANG (Branch)</b> Jl. Jend. Sudirman Km. 3,5 No. 3237 Palembang 30129 Phone : +62 711-36453, 353562, 378178 Fax : +62 711-380995 e-mail : al78@pb@altrak1978.co.id	<b>SANGATTA (Depo)</b> Road 09 Sangatta - Kalimantan Timur 75611 Phone : +62 549-23360, 23455 Fax : +62 549-23361 e-mail : al78@sgt@altrak1978.co.id	<b>TANJUNG PINANG (Depo)</b> Jl. D. Panglitan No. 11, Kel. Melayu, Kota Piring Batu Tujoh - Tanjung Piring 29123 Phone : +62 771-8080177 Fax : +62 771-8080377 e-mail : depotpinang@altrak1978.co.id
<b>BATU KAJANG (Depo)</b> Jl. Rukun, Depan Mes BUMA - Batu Kajang 76252 Phone : +62 543-5230488 Fax : +62 543-5230579 e-mail : sprinkler@altrak1978.co.id	<b>CIKARANG (Outlet)</b> Ruko Royo Block C-22, Lippo Cikarang - Cikarang 17550 Phone : +62 711-89901978, 8973006 Fax : +62 711-89901977 e-mail : depocikarang@altrak1978.co.id	<b>LAMPUNG (Branch)</b> Jl. Raya Natar Pemanang No. 78 Lampung Selatan 35362 Phone : +62 721-789976, 789978, 7742488 Fax : +62 721-789977 e-mail : al78@lp@altrak1978.co.id	<b>PANGKAL PINANG (Branch)</b> Jl. M. Saib Zainuddin No. 243, RT. 03/02 Pangkal Pinang - Bangka 33116 Phone : +62 717-431677 Fax : +62 717-431677 e-mail : al78@pp@altrak1978.co.id	<b>SATU (Depo)</b> Jl. Prognis Km. 163 No. 023, RT. 007, Dusun 2 Desa Sei Suka, Kec. Sahul, Kab. Tanah Bumbu Kalimantan Selatan 72175 Phone : +62 512-2708078, 61575 Fax : +62 512-61898 e-mail : roh.satu@altrak1978.co.id	<b>TARAKAN (Rep. Office)</b> Jl. Bhayangkara RT. 48 No. 48B, Komplek Ruko Pasir Putih Kel. Karang Anyar, Pasir Putih - Tarakan 77111 Phone : +62 551-3825985 e-mail : cso5@altrak1978.co.id
	<b>CILACAP (Depo)</b> Jl. Lombok 43, Kel. Gunung Simpang, Kec. Cilacap Tengah, Kab. Cilacap Phone : +62 282 3567602				<b>TEMBAGAPURA (Depo)</b> c/o PT. Freepor Mine Site, Mile 46A, Tembagapura Distrik Tembagapura - 99930, Timika, Papua, Indonesia. Phone : +62 901-462652/462653

# HYDRAULIC HAMMER



# OUTLAST, OUTPERFORM



**High productivity** High percussive performance and EnergyRecovery can increase the output per shift and lower energy & fuel consumption and operator costs.

**Outstanding reliability** Effective dust protection, automated lubrication and double tool retainer bars help to increase breaker availability, lifetime and resale value.

**Low maintenance** Automated lubrication, tailor made maintenance kits and an extended warranty program help to keep service & maintenance cost on a low level.

**Easy maintenance** Service opening provides direct access for routine maintenance; the percussion mechanism can be removed simply from the breaker box.

**Automatic lubrication** Mounted directly on the breaker box is simple to use and makes extremely economical use of lubricant.

**Low maintenance** Automated lubrication, tailor made maintenance kits and an extended warranty program help to keep service & maintenance cost on a low level.

**Reduced strain on carrier** Percussion mechanism suspended in prestressed elastic damping elements to prevent damage to carrier equipment.

**Low noise emission levels** No acoustic bridges between percussion mechanism and breaker box. All openings plugged.

**Low-recoil action reduces strain on man and machine** Long piston stroke for low recoil.

**Highly durable breaker box** Wear-resistant materials used in high-stress zones.

**Highly durable wear bushings** DustProtector effectively prevents dust penetration.

**Reliable working tools** Precision matching of design, materials and heat treatment. In-house production.



## The Suitable Breaker for each Application



			SB	MB	HB
Mining & quarrying	Preliminary works	Overburden removal Bench, road & ramp levelling Roof, face & rib scaling	●	●	○
	Secondary breaking	Boulder reduction in rock pile Removing blockages at crushing systems	○	●	●
	Primary rock breaking	Selective rock breaking Blast-free mining	-	○	●
Demolition & renovation	Masonry structures	Brickwork Natural stone Autoclaved aerated concrete	●	○	-
	Concrete structures	Lightweight concrete Standard concrete Heavyweight concrete	●	●	○
	Composite steel & concrete structures	Steel-reinforced concrete Prestressed concrete Fibre-reinforced concrete	○	●	●
	Pavements	Asphalt Concrete Composite surfaces	●	●	●
Construction	Earthworks	Trenching Pit building Ground excavation	○	●	●
	Tunneling	Tunnel driving Roof, face & rib scaling Floor levelling	○	●	●
	Dredging	Canal deepening & extension Dock deepening & extension	○	○	●
	Gardening & Landscaping	Fencing Ground excavation Rock breaking	●	○	-
	Foundation works	Ground levelling	-	○	●
	Building construction	Foundation pile driving	-	○	●
Metallurgical industry	Slag recycling	Boulder reduction in slag heap Removing blockages at crushing systems	○	●	●
	Cleaning & debricking	Ladles Converter mouths Kilns	●	○	-

● Optional ○ Suitable - Unsuitable  
SB (Compact range) : SD 10-SD 70 MB (Medium range) : SD 100-SD 220 HB (Heavy-duty range) : SD 300-SD 800

## Accessories

### Auto lubrication system

Automatic lubrication system designed to ensure a long, trouble-free life specifically for hydraulic hammers.

The unit is installed to the hammer's housing with a mounting plate and no external electric cables or hydraulic hoses are needed.



### Auto shut-off system

The hammer stops hammering itself to prevent a damage caused by blank hammering.

### Accumulator

SD 160, SD 200, SD 200V, SD 220 is an option.  
SD 300 and above is basically equipped.

### Blow rate control system

Two modes are available. BR mode is suitable for soft, nonabrasive rock and especially concrete. IE mode is suitable for hard and abrasive rock

#### BR mode



#### IE mode



# Backhoe Loader and Skid Steer Loader



Description	Unit	SD 30-SL	SD 30S-SL	SD 40-SL	SD 40S-SL
Operating weight	kg	175	217	223	260
Tool diameter	mm	53	53	60	60

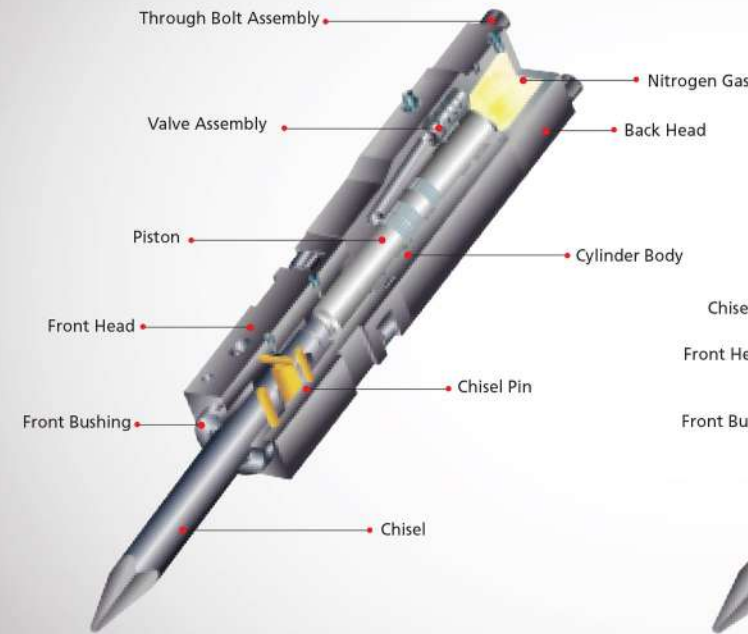
Description	Unit	SD 50-BH	SD 50S-BH	SD 70-BH	SD 70S-BH
Operating weight	kg	272	304	384	405
Tool diameter	mm	68	68	75	75

## Applicable Carrier

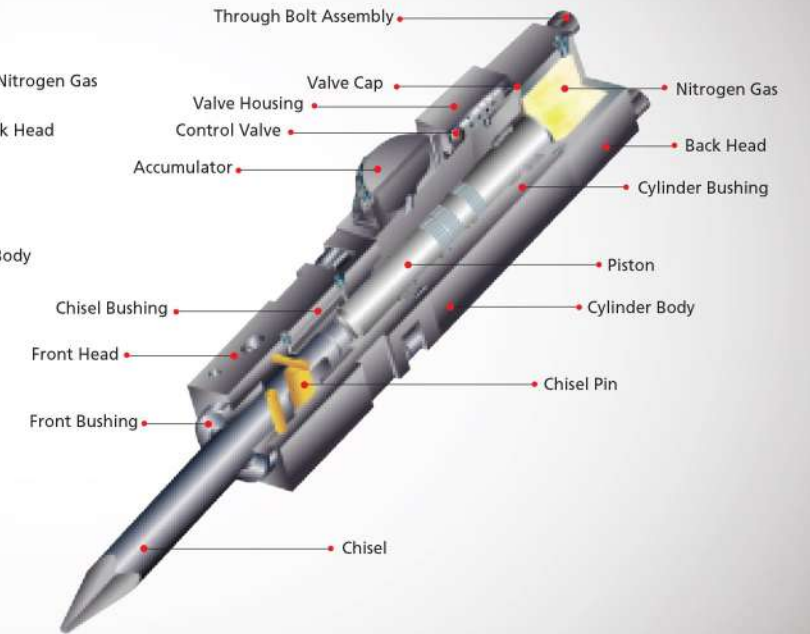
Model	SD 10	SD 20	SD 30	SD 40	SD 50	SD 70	SD 100	SD 140	SD 160	SD 200	SD 200V	SD 220	SD 300	SD 400	SD 500	SD 800
Applicable Carrier	0.8~2.5	1.2~3	2.5~4.5	3~5.5	4~7	6~9	7~12	11~16	14~18	16~21	16~25	18~26	25~32	30~42	45~60	70~100
<b>CAT</b>		301	302-5 303-5 216 226 236,242 228	307 303CR 304-5,232 438,E70B	305CR,307 416D 420,426 428,430 438,E70B	E70B 428 430	307 308 931 446B	311,312,314 E110B,205 206,515 206BFT 212BFT	317, M318 320L 214B,315 E120B 525B 535B	320 545 320 320B 322	320 321 322(L) 330(L) 235	320 229 325 330(L) 235	S330(L) 345BL	245,365 50ME 345,350(L)	374D L 390D 390D L	
<b>HYUNDAI</b>	R16-7	R22-7	R35-7	R55-7 HSL850-7 R55-5	R60-7 HSL850-7 R60W-7 R60-7	R60	R80-7	R130W R130LC-7 R140LC-7	R170W-7 180WLC-7 R190WLC	R210LC-7	R210LC-7	R210LC-7 R250LC-7	R290LC-7 R320LC-7	R320LC-7 R360LC-7	R420LC-7 R450LC-7 R500LC-7	R800LC-9 R800LC-7A
<b>HITACHI</b>	EX8 EX12	UE10 UE15 EX18	ZX27U, 30U X27U, 30U 35U	ZX40U-2 ZX50UR-2 EX25,30	EX60,70,75 ZX70,75	EX70,75	UH04 EX70,80,90 WH04 ZX110 EX50,EX60	EX100 EX120 ZX120	ZX160W EX150 160WD	EX200	ZX230	EX200,220 240LC ZX230	EX270,300	400 ZX330 360LC	EX400	ZX870LC-5
<b>KOMATSU</b>	PC10	PC20 25 30	30	45-1 60-7 PC40	PC50/60 PC75/80 PW75 PC90	PC75 PC80	PC80	PC100 130-6,150 PW130-6	PC160-6 180-6 PW170ES-6	PC200-6	PC200-6	PC200-6 PC240 PF55C-1	PC250	PC300	340,380LC-6	PC400,450-6 PC750-7 PC800-7
<b>JCB</b>	801	8015 8016	1CX,2CX 803,804 ROROT150 160/165 170/185	3CX,4CX JS70 ROROT190	3CX,4CX ZL70 ROROT1105 1110 407/408/409 410ZX	3CX 4CX ZL70	4CX 416HT	JS130 JS145,805 806,811 812,814 5C/W	JS160,180 JS150,175	JS200	JS220 JS240 JS200	JS220 JS240 JS200	JS260 JS290	JS330 JS360	JS450 JS460	
<b>KOBELCO</b>	SK015 SK020	15SR 20SR	25 30 30SR	40SR 55SR	SK050 SK60	SK60 70SR	SK60 70SR	100 100W 115SR	120LC 150LC 135SR	SK200-8	SK200-8 230LC	SK200-8 230LC 250LC	300LC 320	SK330-8	SK460-8	SK850LC
<b>DOOSAN</b>	15		30	50W 55	70	70 80	80W	130W 135W 140W 150	170W-3		225LC-7 220LC-5	300 258LC-7	300LC-5 290LC-3 330LC-3	360LC-3	420 400LC-3 500	DX700LC
<b>HYUNDAI</b>	E9	E16 E18	E20 E22 E27	E30 E35	E40 E50 B90B B100B	E80 E90	E70SR E80SR B110B	MH2,6 MH3,6	E135B E150		E175B MH5,6 E195B	E195B MH6,6 MH8,6 E215	E235 E245	E385	E485B	
<b>VOLVO</b>	EC14 EC15B	EC20B	EC30 EC25 ZL302C	3W EC35 EC45	EC55 EC70 EW50 EW70 L20B/25B L30B/35B L40B/45B	L40B	BL74 L50D 612 616B	EC130 EW130 SE130 SE130W EW140/646 L60E L70E	EC140B EC150 EW150 EW160 L90E	EC210B	EC210B	EC210B EC240B	EC210B EC290B	352 360B 460B	EC620 EC650	EC700
<b>LAUNCHER</b>			A310 L506/507 508/509 512/514	512 514 A308	A308 A310	A312 A309	A/R902 R317 R313 R312 A316	A900C A904 A912 A922 R906	A/R942LIT R916 R914 A924	R924 R926 R954 R961 R962	R924 R926 R954 R961 R962	R944 R952 R954LIT	A944 R962LIT R964			

# Valve Types

## Valve built-in type



## Valve built-out type



### Compact range

Model	Operating Weight (kg)	Applicable Carrier (ton)	Valve Type
SD 10	100	0.8 ~ 2.5	Built-in
SD 20	134	1.2 ~ 3	Built-in
SD 30	148	2.5 ~ 4.5	Built-in
SD 40	186	3 ~ 5.5	Built-in
SD 50	304	4 ~ 7	Built-in
SD 70	405	6 ~ 9	Built-in

### Medium range

Model	Operating Weight (kg)	Applicable Carrier (ton)	Valve Type
SD 100	530	7 ~ 12	Built-in
SD 140	880	11 ~ 16	Built-in
SD 160	1307	14 ~ 18	Built-in
SD 200	1462	16 ~ 21	Built-in
SD 200V	1710	16 ~ 25	Built-out
SD 220	1903	18 ~ 26	Built-in

### Heavy-duty range

Model	Operating Weight (kg)	Applicable Carrier (ton)	Valve Type
SD 300	2454	25 ~ 32	Built-out
SD 400	3020	30 ~ 42	Built-out
SD 500	4120	45 ~ 60	Built-out
SD 800	7415	70 ~ 100	Built-out

## Chisel Types



### MOIL POINT TOOL

- Soft, nonabrasive and tough rock and especially concrete
- Materials requiring high penetration rate
- Where chisels have excessive retaining pin groove wear



### FLAT (BLUNT) TOOL

- Hard rock with low or medium abrasive content
- Boulder breaking or concrete demolition
- Application where tool wear rate is low



### UNIVERSAL TOOL

- Where chisels have excessive retaining pin groove wear
- Soft and nonabrasive rock
- General demolition of concrete



### COMPACTING TOOL

- Ground compacting



### H-WEDGE TOOL

- Hard and abrasive rock with fractures
- For application where drilling and blasting cannot be used
- Materials with low penetration rate



### ASPHALT CUTTING TOOL

- Frozen or compact ground
- Asphalt

# SD Series / Specification



## Silenced Type (Box Type)

Description	Unit	SD 10S	SD 20S	SD 30S	SD 40S	SD 50S	SD 70S	SD 100S	SD 140S	SD 160S	SD 200S	SD 200VS	SD 220S	SD 300S	SD 400S	SD 500S	SD 800S
Operating weight	kg	100	134	148	186	304	405	530	880	1307	1462	1710	1903	2454	3020	4120	7415
Overall length	mm	1087	1215	1285	1363	1682	1684	2068	2361	2615	2701	2766	2860	3057	3306	3782	4443
Operating pressure	bar	80~100	100~120	100~120	110~130	140~160	140~160	120~150	150~170	150~180	160~180	160~180	160~180	160~180	160~180	160~180	190~210
Impact rate	bpm	700~1200	700~1200	550~1000	500~900	500~800	400~800	400~800	400~700	400~600	400~600	400~700	400~600	300~550	250~400	200~350	200~400
Impact energy	joule	180	254	286	447	620	945	1029	2630	4740	5210	5830	6380	8250	12110	14870	16740
Hose diameter	inch	3/8	3/8	1/2	1/2	1/2	1,2	3/4	3/4	1	1	1	1	1	1 1/4	1 1/4	1 1/4
Tool diameter	mm	36	45	53	60	68	75	85	100	125	135	135	140	150	160	180	210
Applicable carrier	ton	0,8~2,5	1,2~3	2,5~4,5	3~5,5	4~7	6~9	7~12	11~16	14~18	16~21	16~25	18~26	25~32	30~42	45~60	70~100

\* The above specifications are subject to change without prior notice for improvement.

## Standard Type (Open Type)

Description	Unit	SD 10	SD 20	SD 30	SD 40	SD 50	SD 70	SD 100	SD 140	SD 160	SD 200	SD 200V	SD 220	SD 300	SD 400	SD 500	SD 800
Operating weight	kg	70	87	106	178	272	384	508	872	1255	1455	1668	1871	2380	2960	4064	7251
Overall length	mm	1050	1146	1230	1288	1491	1613	2115	2387	2621	2757	2775	2781	3062	3265	3854	4385
Operating pressure	bar	80~100	100~120	100~120	110~130	140~160	140~160	120~150	150~170	150~180	160~180	160~180	160~180	160~180	160~180	160~180	190~210
Impact rate	bpm	700~1200	700~1200	550~1000	500~900	500~800	400~800	400~800	400~700	400~600	400~600	400~700	400~600	300~550	250~400	200~350	200~400
Impact energy	joule	180	254	286	447	620	945	1029	2630	4740	5210	5830	6380	8250	12110	14870	16740
Hose diameter	inch	3/8	3/8	1/2	1/2	1/2	1,2	3/4	3/4	1	1	1	1	1	1 1/4	1 1/4	1 1/4
Tool diameter	mm	36	45	53	60	68	75	85	100	125	135	135	140	150	160	180	210
Applicable carrier	ton	0,8~2,5	1,2~3	2,5~4,5	3~5,5	4~7	6~9	7~12	11~16	14~18	16~21	16~25	18~26	25~32	30~42	45~60	70~100

\* The above specifications are subject to change without prior notice for improvement.

## Side Type (Triangle Type)

Description	Unit	SD 10E	SD 20E	SD 30E	SD 40E	SD 50E	SD 70E	SD 100E	SD 140E	SD 160E	SD 200E	SD 200VE	SD 220E	SD 300E	SD 400E	SD 500E	SD 800E
Operating weight	kg	70	85	104	154	264	380	492	853	1260	1410	1684	1989	2394	3085	4010	7180
Overall length	mm	899	1010	1074	1124	1312	1366	1728	1927	2155	2289	2290	2337	2571	2737	3249	3792
Operating pressure	bar	80~100	100~120	100~120	110~130	140~160	140~160	120~150	150~170	150~180	160~180	160~180	160~180	160~180	160~180	160~180	190~210
Impact rate	bpm	700~1200	700~1200	550~1000	500~900	500~800	400~800	400~800	400~700	400~600	400~600	400~700	400~600	300~550	250~400	200~350	200~400
Impact energy	joule	180	254	286	447	620	945	1029	2630	4740	5210	5830	6380	8250	12110	14870	16740
Hose diameter	inch	3/8	3/8	1/2	1/2	1/2	1,2	3/4	3/4	1	1	1	1	1	1 1/4	1 1/4	1 1/4
Tool diameter	mm	36	45	53	60	68	75	85	100	125	135	135	140	150	160	180	210
Applicable carrier	ton	0,8~2,5	1,2~3	2,5~4,5	3~5,5	4~7	6~9	7~12	11~16	14~18	16~21	16~25	18~26	25~32	30~42	45~60	70~100

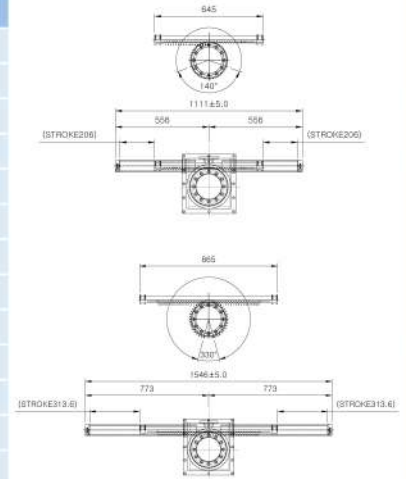
\* The above specifications are subject to change without prior notice for improvement.

# SANGDO MINI CRANE GRABBER SMC SERIES



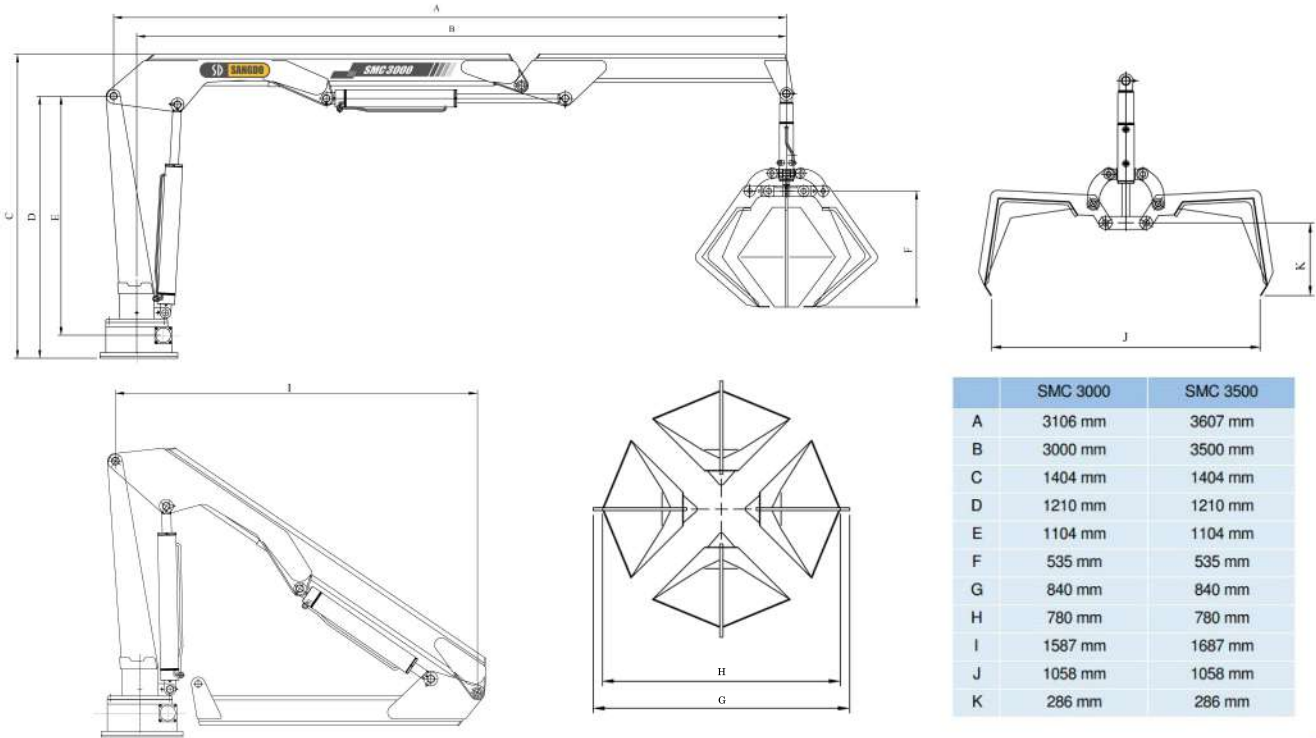
## TECHNICAL DATA FOR SMC SERIES

DESCRIPTION	UNITS	SMC 3000	SMC 3500
Weight	Kg	230	250
Swivel Gear OD	mm	225	225
Max outreach	mm	3000	3500
Lifting Capacity at max outreach	Kg	180	180
Slewing Angle	degree	220° degree ( 370° Option )	220° degree ( 370° Option )
Lifting Height	mm	3000	4766
Grabber	jaw	4	4
Weight	kg	60	60
Max Jaw Opening	mm	1000	1000
Rated Oil Flow	cc/rev	10	10
Working Pressure	bar	170	170
Shape Of Boom	Hexagonal box construction, 3 section boom		
Standard Safety Devices	1. Pressure relief valve for hydraulic circuit 2. Counter balance valves for raise and telescope cylinder		



\* The above specifications are subject to change without prior notice for improvement.

## DIMENSION FOR SMC SERIES



### PT. ALTRAK 1978

Jl. RSC. Veteran No. 4, Bintaro, Jakarta 12330.  
 Telp. +6221 - 7361978 (Hunting). Fax. +6221 - 7361977.  
 E-Mail. al78@altrak1978.co.id  
 www.altrak1978.co.id

#### OFFICE NETWORKS:

JAKARTA (021) 7362230 ADARO (0526) 2027700 BALIKPAPAN (0542) 761978 BANDUNG (022) 87523793 BANJARMASIN (0511) 3251979 BATAM (0778) 471978 BATU KAJANG (0543) 5230488 BENETE (0372) 635260 BENGALON (081225430084) BERAU (0554) 2020118 BITUNG (0438) 35078 BONTANG (08125417977) CIKARANG (021) 89901978 CILEGON (0254) 390678 DENPASAR (0361) 234029 JAMBI (0741) 63408 KETAPANG (0534) 34476 LAMPUNG (0721) 789976 LAUTZE (021) 34834511 MAKASAR (08115414700) MANADO (0431) 812612 MEDAN (061) 8449978 PADANG (0751) 4485624 PALEMBANG (0711) 364453 PANGKAL PINANG (0717) 439578 PEKANBARU (0761) 567678 PONTIANAK (0561) 748670 SAMARINDA (0541) 261978 SAMPIT (0531) 34008 SANGATTA (0549) 23380 SATUI (0512) 61575 SEMARANG (024) 3581371 SURABAYA (031) 8471978 TANJUNG PINANG (0771) 8080177



# SANGDO INTERNATIONAL TRUCK MOUNTED CRANE



# SANGDO INTERNATIONAL Truck Mounted Crane







# Truck Mounted Crane

## Features of SC Series

### Features

1. Optimum Design by FEM

### Details

- Optimally designed by load-stress distribution simulation of Finite Element  
Method : Boom, Swing Post, Frame, Outrigger, Bolts, Pins and etc.
- Minimized crane weight, maximized durability and hardness.

2. Strong Boom Construction

- Optimum Design by FEM : Pentagonal / Hexagonal Boom
- Excellent durability, hardness and light weight by adopting high-tension steel.
- Smooth extension and retraction

3. Extra-Wide Outrigger

- Ensures stability on rugged terrain, slopes and any working condition.
- 2-stage (horizontal) front outrigger (above SC 1015ML)

4. Powerful Derricking

- Powerful and smooth derrick Cylinder
- Optimum positioning of derrick pin for enough space for loading and maximum lifting moment.

5. Top Seat

- Provides a full view of work site.
- Reduces fatigue from long hours of operation.

6. Specially designed MCV for SC Series

- Proportional Valve adopted for Large Class

7. Automatic Acceleration System

- Automatically adjusted from idle to full throttle by the position of control levers.
- Saves time and fuel consumption.

8. Safty Devices

- Overwinding Alarm System
- Automatic Mechanical Brake for Winch
- Hydraulic Swing Locking System
- Hook Safty Latch
- Pilot Check Valve / Counterbalance Valve / Overcentre Valve / Relief Valve
- Boom Angle Indicator

### Application

- Providing time-saving, cost-effective and reliable load handling solutions for construction and civil engineering, factory, oil and gas field, logistics, military logistics, mining, port and shipyard, general transport, municipalities, public utilities, etc.
- Combination of telescopic boom and winch with wire rope enables easy and efficient operation for material handling even in narrow and confined space such as deep-underground, high-rise buildings, and under a bridge, etc.
- Low noise, silent winch with automatic brake system.
- Safety devices : Pressure relief valve, over-center valve, over-winding alarm device, pilot check valves for outriggers, swing locking device, etc.
- Optional features : Auxiliary or JIB boom, auxiliary winch, overloading prevention device, remote controller, oil cooler, etc.

# Truck Mounted Crane Line-Up

## Compact Range Crane (SC 313ML / SC 314ML / SC 315ML / SC 513ML / SC 514ML / SC 515ML)

### • Lifting Capacity

#### SC 313ML

Lifting Capacity (kg/m)



#### SC 314ML

Lifting Capacity (kg/m)



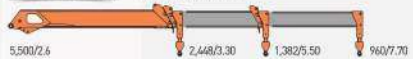
#### SC 315ML

Lifting Capacity (kg/m)



#### SC 513ML

Lifting Capacity (kg/m)



#### SC 514ML

Lifting Capacity (kg/m)



#### SC 515ML

Lifting Capacity (kg/m)



#### ▲ SC 313ML

- Max. Lifting capacity .... 8.0 ton/m
- Max. Work Height ..... 10.8m
- Max. Work Radius ..... 7.7m

#### ▲ SC 314ML

- Max. Lifting capacity .... 8.0 ton/m
- Max. Work Height ..... 13.0m
- Max. Work Radius ..... 9.92m

#### ▲ SC 514ML

- Max. Lifting capacity .... 10.0 ton/m
- Max. Work Height ..... 13.0m
- Max. Work Radius ..... 9.92m

Description		Units	SC 313ML	SC 314ML	SC 315ML	SC 513ML	SC 514ML	SC 515ML
Max. Lifting Capacity		ton-meter	8.0	8.0	8.0	10.0	10.0	10.0
Lifting Capacity / Outreach		kg/m	3,500 / 2.6	3,500 / 2.6	3,500 / 2.6	5,500 / 2.6	5,500 / 2.0	5,500 / 2.6
			2,460 / 3.30	2,408 / 3.32	2,228 / 3.47	2,448 / 3.30	2,947 / 3.32	2,313 / 3.34
			1,396 / 5.50	1,337 / 5.52	1,206 / 5.67	1,382 / 5.50	1,660 / 5.52	1,229 / 5.54
			972 / 7.70	922 / 7.72	820 / 7.87	960 / 7.70	1,153 / 7.72	828 / 7.74
				694 / 9.92	606 / 10.07		872 / 9.92	607 / 9.94
Working Radius		m	7.7	9.92	12.27	7.73	9.92	12.14
Max. Working Height		m	10.8	13	15.1	10.8	13	15.5
Rated Oil Flow		cc/rev	40	40	40	40	40	37
Working Pressure		kg/cm <sup>2</sup>	180	180	180	180	180	180
Shape of Boom			Hexagonal box construction, 3 section boom with 2 extension cylinder	Hexagonal box construction, 4 section boom with 2 extension cylinder	Hexagonal box construction, 5 section boom with 2 extension cylinder	Hexagonal box construction, 3 section boom with 2 extension cylinder	Hexagonal box construction, 4 section boom with 2 extension cylinder	Hexagonal box construction, 5 section boom with 2 extension cylinder
Boom Length		m	Min. 3.53 ~ Max. 7.93	Min. 3.54 ~ Max. 10.1	Min. 3.69 ~ Max. 12.49	Min. 3.53 ~ Max. 7.93	Min. 3.54 ~ Max. 10.14	Min. 3.56 ~ Max. 12.36
Boom Extending Speed		m/sec	4.4 / 18	6.6 / 18	8.8 / 18	4.4 / 18	6.6 / 18	8.8 / 18
Boom Raising Speed		°/sec	-15~78 / 13	-15~78 / 13	-15~78 / 13	-15~78 / 13	-15~78 / 13	-15~78 / 9
Slewing Angle		°	360° continuous	360° continuous	360° continuous	360° continuous	360° continuous	360° continuous
Slewing Speed		r.p.m	2	2	2	2	2	2
Wire Rope		Ø x m	Ø8 x 75m	Ø8 x 75m	Ø8 x 75m	Ø8 x 75m	Ø8 x 75m	Ø8 x 75m
Hook Speed		m/min	15 (4th layer / 4 fall lines)					
Winch Type			Hyd. motor driven, spur gear speed reduction with mechanical brake					
Slewing Gear Type			Hyd. motor driven, worm gear speed reduction with hydraulic brake					
Outrigger System	Front	Type	H-type, single stage horizontally & Vertically Hydraulic operated					
		Span	m	Max. 4.33	Max. 4.33	Max. 4.33	Max. 4.33	Max. 4.33
	Middle	Type						
		Span	m					
Rear	Type	H-type, single stage horizontally & Vertically Hydraulic operated						
	Span	m	Max. 4.15	Max. 4.15	Max. 4.15	Max. 4.15	Max. 4.15	Max. 4.15

※ The above specifications are subject to change without prior notice for improvement.

# Truck Mounted Crane Line-Up

## Medium Range Crane (SC 715ML / SC 716ML / SC 716S / SC 816ML / SC 817ML)



### SC 716ML

- Max. Lifting capacity ..... 17.0 ton/m
- Max. Work Height ..... 22.0m
- Max. Work Radius ..... 18.98m



### SC 716S

- Max. Lifting capacity ..... 17.0 ton/m
- Max. Work Height ..... 22.0m
- Max. Work Radius ..... 19.02m

### • Lifting Capacity

#### SC 715ML

Lifting Capacity (kg/m)



#### SC 716ML

Lifting Capacity (kg/m)



#### SC 716S

Lifting Capacity (kg/m)



#### SC 816ML

Lifting Capacity (kg/m)



#### SC 817ML

Lifting Capacity (kg/m)



### SC 817ML

- Max. Lifting capacity ..... 18.5 ton/m
- Max. Work Height ..... 25.2m
- Max. Work Radius ..... 22.0m

Description		Units	SC 715ML	SC 716ML	SC 716S	SC 816ML	SC 817ML	
Max. Lifting Capacity		ton-meter	17.0	17.0	17.0	18.5	18.5	
Lifting Capacity / Outreach	kg/m		7,500 / 2.0	7,500 / 2.0	7,500 / 2.0	8,000 / 2.0	8,000 / 2.0	
			3,318 / 4.38	3,336 / 4.73	2,784 / 4.77	3,844 / 4.73	4,243 / 4.99	
			1,716 / 7.23	1,719 / 7.58	1,368 / 7.62	1,959 / 7.78	2,070 / 7.60	
			1,146 / 10.08	1,043 / 10.43	786 / 10.47	1,194 / 10.83	1,173 / 10.52	
			834 / 12.93	766 / 13.28	563 / 13.32	876 / 13.88	816 / 13.42	
			633 / 15.78	585 / 16.13	417 / 16.17	671 / 16.93	586 / 16.34	
				458 / 18.98	315 / 19.02	527 / 19.98	425 / 19.25	333 / 22.2
Working Radius	m	15.78	18.98	19.02	19.98	22		
Max. Working Height	m	19	22	22	23	25.2		
Rated Oil Flow	cc/rev	56	56	56	63	63		
Working Pressure	kg/cm <sup>2</sup>	200	200	200	200	210		
Shape of Boom		Hexagonal box construction, 5 section boom with 2extension cylinder	Hexagonal box construction, 6 section boom with 3extension cylinder	Hexagonal box construction, 6 section boom with 3extension cylinder	Hexagonal box construction, 6 section boom with 3extension cylinder	Hexagonal box construction, 6 section boom with 3extension cylinder		
Boom Length	m	Min. 4.63 ~ Max. 16.03	Min.4.9 ~ Max.19.2	Min.4.9 ~ Max.19.2	Min.4.9 ~ Max.20.23	Min.4.9 ~ Max.22.4		
Boom Extending Speed	m/sec	11.4 / 30	14.25 / 36	14.25 / 36	15.25 / 35	17.46 / 38		
Boom Raising Speed	°/sec	-17~80/30	-17~80/18	0~78/11	-17~80/30	-17~80/30		
Slewing Angle	°	360° continuous	360° continuous	360° continuous	360° continuous	360° continuous		
Slewing Speed	r.p.m	2	2	2	2	2		
Wire Rope	Ø x m	Ø10 x 100m	Ø10 x 100m	Ø10 x 100m	Ø10 x 100m	Ø10 x 100m		
Hook Speed	m/min	15 (4th layer / 4 fall lines)						
Winch Type		Hyd. motor driven, spur gear speed reduction with mechanical brake						
Slewing Gear Type		Hyd. motor driven, worm gear speed reduction with hydraulic brake						
Outrigger System	Front	Type	H-type, single stage horizontally & Vertically Hydraulic operated					
		Span	m	Max. 5.7	Max. 5.7	Max. 5.7	Max. 6.0	Max. 6.0
	Middle	Type						
		Span	m					
Rear	Type	H-type, single stage horizontally & Vertically Hydraulic operated						
	Span	m	Max. 4.6	Max. 4.6	Max. 4.6	Max. 4.6	Max. 4.6	

※ The above specifications are subject to change without prior notice for improvement.

# Truck Mounted Crane Line-Up

## Heavy-Duty Range Crane (SC 1015ML / SC 1016ML / SC 1516ML / SC 1716ML / SC 2016ML)

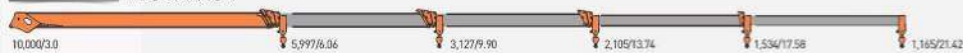
### ► SC 1015ML

- Max. Lifting capacity .... 37.0 ton/m
- Max. Work Height ..... 24.3m
- Max. Work Radius ..... 21.42m



### • Lifting Capacity

#### SC 1015ML Lifting Capacity (kg/m)



#### SC 1016ML Lifting Capacity (kg/m)



#### SC 1516ML Lifting Capacity (kg/m)



#### SC 1716ML Lifting Capacity (kg/m)



#### SC 2016ML Lifting Capacity (kg/m)



### ▲ SC 2016ML

- Max. Lifting capacity .... 70.0 ton/m
- Max. Work Height ..... 34.0m
- Max. Work Radius ..... 30.05m

Description		Units	SC 1015ML	SC 1016ML	SC 1516ML	SC 1716ML	SC 2016ML	
Max. Lifting Capacity		ton-meter	37.0	37.0	48.0	56.0	70.0	
Lifting Capacity / Outreach		kg/m	10,000 / 3.0	10,000 / 3.0	15,000 / 2.0	17,000 / 2.0	20,000 / 2.0	
			5,997 / 6.06	5,897 / 6.06	8,301 / 6.22	8,032 / 6.39	9,080 / 7.05	
			3,127 / 9.90	2,990 / 9.90	4,457 / 10.02	4,139 / 10.49	4,514 / 11.65	
			2,105 / 13.74	1,822 / 13.74	2,817 / 13.82	2,534 / 14.59	2,672 / 16.25	
			1,534 / 17.58	1,338 / 17.58	2,108 / 17.63	1,869 / 18.69	1,951 / 20.85	
			1,165 / 21.42	1,025 / 21.42	1,645 / 21.42	1,437 / 22.79	1,486 / 25.45	
			806 / 25.26		1,318 / 25.23	1,135 / 26.89	1,161 / 30.05	
Working Radius		m	21.42	25.2	25.2	26.89	30.05	
Max. Working Height		m	24.3	28	28.5	30	34	
Rated Oil Flow		cc/rev	88×88	88×88	88×88	88×88	100×100	
Working Pressure		kg/cm <sup>2</sup>	200/200(Winch)	200/200(Winch)	220/210(Winch)	210/210(Winch)	195/230(Winch)	
Shape of Boom			Hexagonal box construction, 5 section boom with 2extension cylinder	Hexagonal box construction, 6 section boom with 3extension cylinder	Hexagonal box construction, 6 section boom with 3extension cylinder	Hexagonal box construction, 6 section boom with 3extension cylinder	Hexagonal box construction, 6 section boom with 3extension cylinder	
Boom Length		m	Min. 6.40 ~ Max. 21.7	Min. 6.43 ~ Max. 25.63	Min. 6.72 ~ Max. 25.72	Min. 6.88 ~ Max. 27.38	Min. 7.53 ~ Max. 30.55	
Boom Extending Speed		m/sec	15.9 / 43	19.2 / 54	20.5 / 60	20.5 / 60	23.0 / 65	
Boom Raising Speed		°/sec	-13~80/28	-13~80/28	-10~80/30	-10~80/30	-9~80/30	
Slewing Angle		°	360° continuous	360° continuous	360° continuous	360° continuous	360° continuous	
Slewing Speed		r.p.m	1.5	1.5	1.5	1.5	1.5	
Wire Rope		Ø x m	Hercules 19×7 Ø14×100m	Hercules 19×7 Ø14×100m	Hercules 19×7 Ø14×100m	Hercules 19×7 Ø14×100m	Hercules 19×7 Ø14×100m	
Hook Speed		m/min	15 (4th layer / 4 fall lines)					
Winch Type			2 Speed winch, hydraulic motor driven, planetary gear reduction with Hydraulic brake					
Slewing Gear Type			Hyd. motor driven, worm gear speed reduction with hydraulic brake					
Outrigger System		Front	Type	H-type, single stage horizontally & Vertically Hydraulic operated				
			Span	m	Max. 6.0	Max. 7.3	Max. 7.3	Max. 7.3
		Middle	Type	H-type, single stage horizontally & Vertically Hydraulic operated				
			Span	m				
Rear	Type	H-type, single stage horizontally & Vertically Hydraulic operated						
	Span	m	Max. 4.8	Max. 5.5	Max. 5.5	Max. 5.5	Max. 6.0	

※ The above specifications are subject to change without prior notice for improvement.

# Outstanding Features

## SANGDO TELESCOPIC TYPE CRANE SERIES



### Swing Reduction

Enables smooth and strong operation when swing the boom.



### Front Outrigger – H type (above 7 tons)

Ensures stability on rugged terrain, slopes and any working condition.



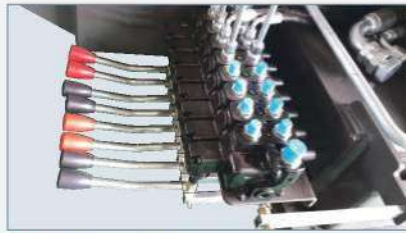
### Double Derrick Cylinder (above 7 tons)

More powerful and safe operation when lifting the heavy materials.



### Minus Boom

The working range has been widely improved by extending the boom angle from +80 to -17 degree. You can take advantage of minus boom system in many job sites such as an exterior wall construction and unloading work.



### Main Control Valve

Main control valve equipped with auto-acceleration function which enhances multi-operation function.



Mini Tractor Crane

## Variable Application



Pedestal Crane in Vessel



Pedestal Crane in Port

## Option



### Overwinding Alarm Device

To prevent a damage by alarming when the hook block approaches the boom head.



### Cap-In

Provides a safe and pleasant place for the operators.



### Flying

Designed for a high place work purpose.



### Crane Self Loader

Equipment with a self-loader system, the light equipment can be loaded easily.



### Auger

Much deeper drilling is possible and can be applied for ground release drilling, ground investigation, and before sheet piles.



## SANGDO INTERNATIONAL TELESCOPIC TYPE CRANE SERIES



### PT. ALTRAK 1978

JAKARTA (Head Office)  
 Jl. RC.Veteran No. 4, Bintaro, Jakarta 12330 - Indonesia  
 Telp : (021) 7361978 (Hunting)  
 Fax : (021) 7361977, 7363302  
 E-mail : al78@altrak1978.co.id  
 www.altrak1978.co.id



#### OFFICE NETWORK

##### ACEH (Sales Representative)

Jl. Lampoh Saka No. 4 Desa Punge Blang Cut,  
 Kec. Jaya Baru, Kota Banda Aceh.  
 Phone : +62 853 - 81770956

##### AMBON (Sales Representative)

Jl. Lakodya Leo Wattimena, Perummas Blok 1  
 RT/RW 017/007, Kel. Waiheni, Kec. Bagauala,  
 Kota Ambon.  
 Phone : +62 852 - 99564265

##### ASEM REGES (Outlet)

Jl. Lautze Raya Blok A1 No. 7 K, RT. 004/007  
 Kel. Ps. Baru, Kec. Sawah Besar - Jakarta 10710  
 Phone : +62 21 - 34834511, 34854510  
 Fax : +62 21 - 34834506  
 e-mail : deposemreges@altrak1978.co.id

##### BALIKPAPAN (Branch)

Jl. Jend. Sudirman No. 21, Balikpapan 76114  
 Phone : +62 542 - 761978  
 Fax : +62 542 - 761977  
 e-mail : al78@bapp.altrak1978.co.id

##### BALIKPAPAN

(Mining Support & Rebuild Center)  
 Jl. Jend. Sudirman No. 21, Balikpapan 76114  
 Phone : +62 542 - 761978  
 Fax : +62 542 - 761977  
 e-mail : al78@bapp.altrak1978.co.id

##### BANDUNG (Branch)

Jl. BKR No. 80 Kel. Ancol, Kec. Regol  
 Bandung - 40254  
 Phone : +62 22 - 42827424  
 e-mail : al78@bdg.altrak1978.co.id

##### BANJARMASIN (Branch)

Jl. A. Yani Km. 21.5 No. 89, RT. 01/01  
 Kel. Landasan Ulin Utara, Kec. Liang Anggang  
 Kota Banjar Baru - 70723  
 Phone : +62 511 - 3251979, 3257378, 3251361  
 Fax : +62 511 - 3251078, 3251580  
 e-mail : al78@bjm.altrak1978.co.id

##### BATAM (Branch)

Jl. Engku Putri, Kawasan Pertama, Sarana Unggulan  
 Komplek Sarana Industri Point Blok C1 & C2  
 Batam Center - Batam 29461  
 Phone : +62 778 - 471978 (Hunting)  
 Fax : +62 778 - 471171  
 e-mail : al78@btm.altrak1978.co.id

##### BATU KAJANG (Depo)

Jl. PT Kideco RT. 09, Kel. Batu Kajang,  
 Kec. Batu Sopang, Kab. Tana Paser  
 Phone : +62 543 - 5230488  
 Fax : +62 543 - 5230479  
 e-mail : sportleader@btk.altrak1978.co.id

##### BENETE (Depo)

Jl. Raya Benete - Maluk  
 Kec. Maluk - Kab. Sumbawa Barat 84491  
 Phone : +62 372 - 635260, 635578  
 Fax : +62 372 - 635260  
 e-mail : depohed@bnl.altrak1978.co.id

##### BENGKULU (Rep. Office)

Jl. DP Payung Negara No. 50, RT. 001/RW. 001  
 Kel. Bentungan, Kec. Selebar - Bengkulu Kota  
 Phone : +62 736 - 5511170  
 e-mail : csogbkl.altrak1978.co.id

##### BENGALON (Depo)

PT. Darma Henwa Tbk. Pit A Bengalon Project 75618  
 Mobile : +62 81225430084  
 e-mail : sportleader@bgl.altrak1978.co.id

##### BERAU (Depo)

Jl. Raya Alam I RT. 06/RW. 06, Kel. Rinding,  
 Kec. Teluk Bayur - Berau 77313  
 Phone : +62 554 - 2020118, 0811533878  
 Fax : +62 554 - 2020118  
 e-mail : berau@smd.altrak1978.co.id

##### BITUNG (Branch)

Jl. Walanda Maramis No. 155 Madidri Weru  
 Bitung 95514  
 Phone : +62 438 - 35078, 36226  
 Fax : +62 438 - 30249  
 e-mail : al78@btg.altrak1978.co.id

##### BONTANG (Depo)

Indomico Coal Mining Project  
 Tanjung Melayang, Desa Suka Rahmat, Kec. Sangatta  
 Kutai Timur - Kalimantan Timur 75663  
 Mobile : +62 8125417977  
 e-mail : roh.bontang@smd.altrak1978.co.id

##### CIKARANG (Outlet)

Ruku Roxy Block C-22, Lippo Cikarang - Cikarang 17550  
 Phone : +62 21 - 89901978, 8973006  
 Fax : +62 21 - 89901977  
 e-mail : depocikarang@altrak1978.co.id

##### CILACAP (Depo)

Jl. Lombok No. 43, Kel. Gunung Simpung,  
 Kec. Cilacap Tengah, Kab. Cilacap  
 Phone : +62 8125417977

##### CILEGON (Outlet)

Komplek Pondok Cilegon Indah Blok A3 No. 5  
 RT. 003/06, Kerdalemman, Cibeger - Cilegon 42442  
 Phone : +62 254 - 390678, 399971  
 Fax : +62 254 - 399972  
 e-mail : depocilegon@altrak1978.co.id

##### DENPASAR (Branch)

Jl. Prof. Dr. Ida Bagus Mantra No. 466 - 467, Ketewel  
 Kec. Sukawati, Gianyar - Bali 80582  
 Phone : +62 361 - 4763466  
 Fax : +62 361 - 4763710  
 e-mail : al78@dpas.altrak1978.co.id

##### JAMBI (Branch)

Jl. Lingkar Barat I, RT. 41, Kel. Kenali Asam Bawah  
 Kec. Kota Baru - Jambi 36128  
 Phone : +62 741 - 63408, 63699  
 Fax : +62 8287401979, 08287401977  
 Fax : +62 741 - 6468273  
 e-mail : al78@jmb.altrak1978.co.id

##### KAWASAN INDUSTRI JATAKE

(Equipment Stock Yard)  
 Jl. Gajah Tunggal, Kel. Jatake, Kec. Jati Uvung  
 Kota Madya Tangerang 125136  
 Phone : +62 21 - 22359910

##### KENDARI (Branch)

Jl. Malaka, Kel. Anduonohu, Kec. Poasia  
 Kota Kendari - Sulawesi Tenggara  
 Phone : +62 401 - 3082554  
 e-mail : parts@pkr.altrak1978.co.id

##### KETAPANG (Depo)

Jl. Gajah Mada RT. 08/RW. 04, Desa Kalinilam  
 Kec. Delta Pawan - Kabupaten Ketapang 78813  
 Phone : +62 534 - 34476  
 Fax : +62 534 - 34476  
 e-mail : depoketapang@altrak1978.co.id

##### KUPANG (Rep. Office)

Jl. Timor Raya Km. 6, Kel. Oesapa Barat  
 Kec. Kelapa Lima - Kota Kupang - NTT  
 Mobile : +62 380 8441036  
 e-mail : al78@kup.altrak1978.co.id

##### LAMPUNG (Branch)

Jl. Raya Natar Pemanggilan No. 78  
 Lampung Selatan 35362  
 Phone : +62 721 - 789976, 789978, 774288  
 Fax : +62 721 - 789977  
 e-mail : al78@lmd.altrak1978.co.id

##### MAKASSAR (Branch)

Jl. Kimia Raya I, Kavling B-5, Kelurahan Kapass,  
 Kecamatan Binangkaya - Makassar 90241.  
 Phone : +62 411-4741305  
 e-mail : depohed@mk.altrak1978.co.id

##### MANADO (Rep. Office)

Jl. Raya Manado, Bitung Jaga I, Kel. Maumbi  
 Kec. Kalawat - Kota Manado 95117  
 Phone : +62 431 - 812612  
 Fax : +62 431 - 816362  
 e-mail : al78@mdn.altrak1978.co.id

##### MEDAN (Branch)

Jl. Jend. Gatot Subroto KM. 6,2 No. 195 - Medan 20122  
 Phone : +62 61 - 8449978  
 Fax : +62 61 - 8441977  
 e-mail : al78@mdn.altrak1978.co.id

##### MELAK (Depo)

Jl. Sendawar Raya, Barong Tongkok Sendawar  
 Kutai Barat - Kalimantan Timur  
 Mobile : +62 08134731283  
 e-mail : roh.gby@smd.altrak1978.co.id

##### PADANG (Branch)

Jl. By Pass KM. 16,5, Kel. Air Pecah,  
 Kec. Kota Tengah - Padang 25176  
 Phone : +62 751 - 4485624 - 26  
 Fax : +62 751 - 4485623  
 e-mail : al78@pdg.altrak1978.co.id

##### PALANGKARAYA (Sales Representative)

Jl. Antang Kalang II Langkal, Kec. Pahandut  
 Kota Palangkaraya, Kalimantan Tengah - 74874  
 Phone : +62 812 - 50835776

##### PALEMBANG (Branch)

Jl. Jend. Sudirman KM. 3,5 No. 3237  
 Palembang 30129  
 Phone : +62 711 - 364453, 353562, 378178  
 Fax : +62 711 - 360095  
 e-mail : al78@plb.altrak1978.co.id

##### PALU (Sales Representative)

Jl. Setia Budi No. 12 Rt. 005 Rw. 002,  
 Kel. Besusu Timur - Palu Timur.  
 Phone : +62 811 - 4564788

##### PANGKAL PINANG (Branch)

Jl. M. Saleh Zainuddin No. 243, RT. 03/02  
 Pangkal Pinang - Bangka 33116  
 Phone : +62 717 - 439578  
 Fax : +62 717 - 431677  
 e-mail : al78@pkp.altrak1978.co.id

##### PEKANBARU (Branch)

Jl. Soekarno - Hatta KM. 6, No. 78  
 Pekanbaru 28282  
 Phone : +62 761 - 567678  
 Fax : +62 761 - 567677  
 e-mail : al78@pkb.altrak1978.co.id

##### PONTIANAK (Branch)

Jl. KS. Tubun No. 40 - Pontianak 78121  
 Phone : +62 561 - 748670, 748778  
 Fax : +62 561 - 734732  
 e-mail : al78@ptk.altrak1978.co.id

##### SAMARINDA (Branch)

Jl. Ciptomangunkusumo No. 32, RT. 18, Kel. Sengkotek  
 Kec. Loajan III - Samarinda 75131  
 Phone : +62 541 - 261978 (Hunting)  
 Fax : +62 541 - 260292  
 e-mail : al78@smr.altrak1978.co.id

##### SAMARINDA

(Mining Support & Rebuild Center)  
 Jl. Ciptomangunkusumo No. 32, RT. 18, Kel. Sengkotek  
 Kec. Loajan III - Samarinda 75131  
 Phone : +62 541 - 261978 (Hunting)  
 Fax : +62 541 - 260292  
 e-mail : al78@smd.altrak1978.co.id

##### SAMPIT (Branch)

Jl. Jend. Sudirman, Kel. Mentawa Baru, RT. 47 RW. 08  
 Kotawaringin Timur - Kalimantan Tengah 74322  
 Phone : +62 531 - 2611978, 24178  
 Fax : +62 531 - 2618023  
 e-mail : al78@sgt.altrak1978.co.id

##### SANGATTA (Depo)

Jl. A. M. Parikesit RT. 024 No. 85, Singa Gembara,  
 Sangatta Utara, Kutai Timur  
 Phone : +62 549 - 23360, 23455  
 Fax : +62 549 - 23361  
 e-mail : al78@sgt.altrak1978.co.id

##### SATUI (Depo)

Jl. Propinsi KM. 163 No. 029, RT. 007, Dusun 2  
 Desa Sei Suka, Kec. Satui, Kab. Tanah Bumbu  
 Kalimantan Selatan 72175  
 Phone : +62 512 - 61575  
 Fax : +62 512 - 61898  
 e-mail : roh.satui@bjm.altrak1978.co.id

##### SEMARANG (Branch)

Jl. Karang Anyar No. 10 - Semarang 50135  
 Phone : +62 24 - 3581371, 3566382  
 Fax : +62 24 - 8490692  
 e-mail : al78@smg.altrak1978.co.id

##### SORONG (Branch)

Jl. Basuki Rahmat KM. 9 Sawagumu, Sorong Utara  
 Kota Sorong - Papua Barat 98417  
 e-mail : parts@son.altrak1978.co.id

##### SURABAYA (Branch)

Jl. Rungkut Industri III/27 Surabaya 60293  
 Phone : +62 31 - 8471978  
 Fax : +62 31 - 8490629  
 e-mail : al78@sbay.altrak1978.co.id

##### TAMAN TEKNO

(Parts Distribution Center)  
 Pergudangan Taman Tekno - BSD  
 Tahap VII Blok XI/H3 No. 16 - 18 Tangerang  
 Phone : +62 21 - 75876118  
 Fax : +62 21 - 75876121

##### TANJUNG TABALONG (Depo)

Jl. Poros Tanjung RT. 10, Desa Gunung Batu, Kel. Kapar,  
 Kec. Murung Pudak, Kab. Tabalong  
 Kalimantan Selatan 71571  
 e-mail : sportleader@at.altrak1978.co.id

##### TANJUNG PINANG (Depo)

Jl. Di. Panjatjan No. 11, Kel. Melayu, Kota Piring  
 Batu Tujuh - Tanjung Pinang 29123  
 Phone : +62 771 - 8080177  
 Fax : +62 771 - 8080377  
 e-mail : depotpinang@btm.altrak1978.co.id

##### TARAKAN (Rep. Office)

Jl. Bayakanara RT. 48 No. 488, Komplek Ruko Pasir Putih  
 Kel. Karang Anyar, Pasir Putih - Tarakan 77111  
 Phone : +62 551-3829585  
 e-mail : csos@bop.altrak1978.co.id

##### TEMBAGAPURA (Depo)

c/o PT. Freeport Mine Site, Mile #68, Tembapapura  
 Distrik Tembapapura - 99930, Timika, Papua, Indonesia.  
 Phone : +62 901 - 462652 / 462653